

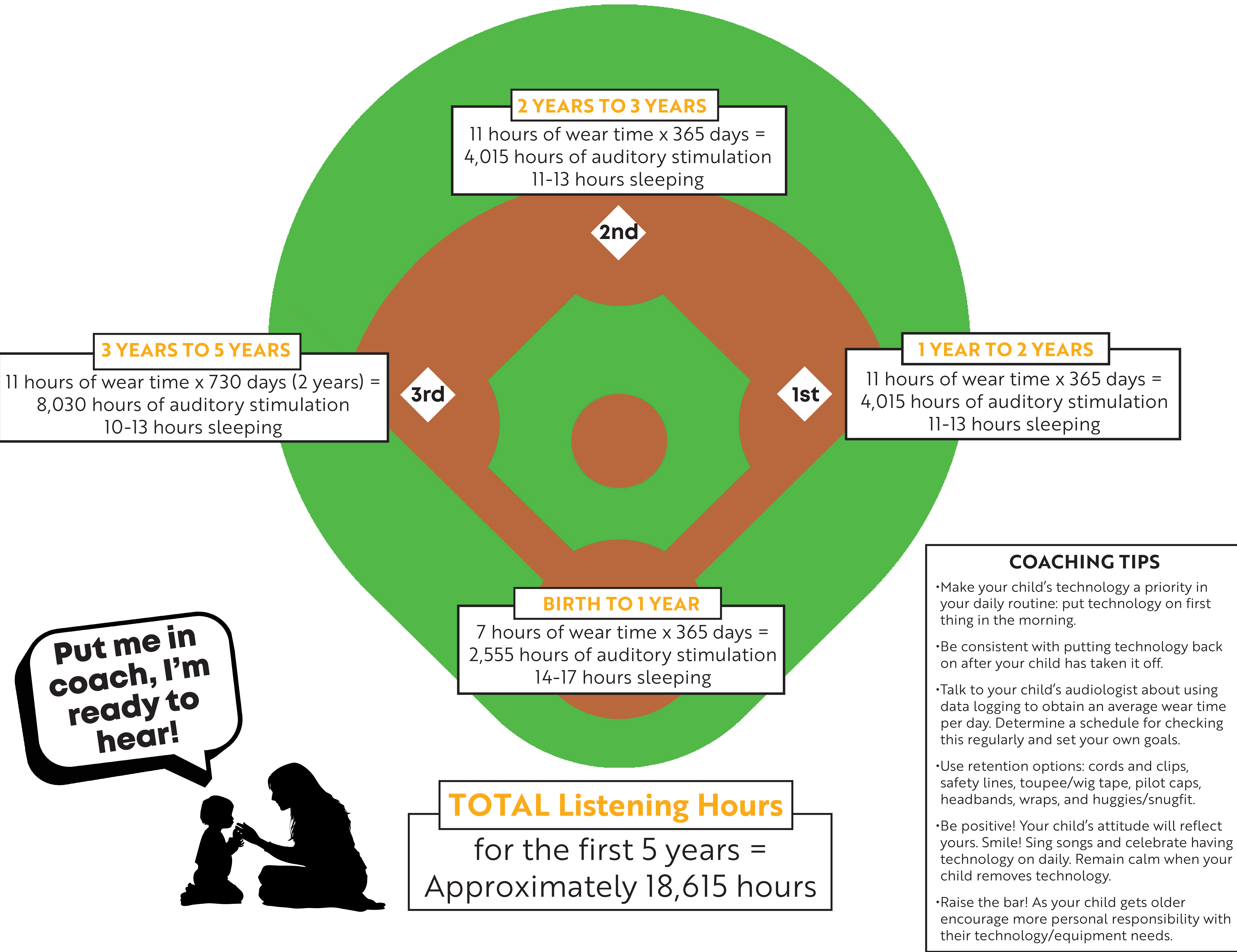
# Sunshine Cottage

A Listening and Spoken Language School for Deaf Children

Judy Bravo, M.DEHS, BBL LSLS Cert. AVEEd., CED; Allison Butterfield, M. DEHS; Melissa L. Chavez, M.DEHS, CED; Amanda Grant, M.S., LSLS Cert. AVT, CE; Donna Kramer, M.Ed., LSLS Cert. AVT, CED; Megan D. Mezza, M.DEHS, CED; Mike Pfeifer, M.DEHS, CED; and Ana Sei, M.DEHS, BBL LSLS Cert AVT. CED

## WHAT SHOULD ALL WAKING HOURS LOOK LIKE FROM BIRTH TO FIVE?

Development of listening and spoken language requires 20,000 hours of listening work.  
This means 20,000 hours of interactional experiences with technology on during the first 5 years of life.



Parents who interact with their child through enriched auditory experiences, and who ensure optimal auditory access for their child, achieve the goal of 45 million words by age 5.

**References:**  
Cole, E. B., & Flexer, C. (2019). Children with Hearing Loss: Developing Listening and Talking, Birth to Six (4th ed.). Plural Publishing.  
**How Much Sleep do Babies and Kids Need?**. Sleep Foundation. (2024, January 8). <https://www.sleepfoundation.org/children-and-sleep/how-much-sleep-do-kids-need>  
Madell, J. R., & Hewitt, J. G. (2023). **From Listening to Language Comprehensive Intervention to Maximize Learning for Children and Adults with Hearing Loss**. Thieme.